



BONE MARROW ASPIRATION

SIMPLICITY

ACCURACY

SAFETY

Vet B.I.G.[™] FASTEST EASIEST IO ACCESS

Bone Marrow evaluation and/or analysis can be an essential diagnostic procedure in a variable of routine clinical investigations, and as such, it is commonly indicated.

1. Fever of unknown origin.
2. suspected hemoparasites: Systemic Ehrlichiosis, certain Mycotics.
3. Tumors staging: Mast cell, Lymphomas,
4. Unexplained and persistent changes in more than one cell line, e.g: Anemia and Thrombocytopenia, Anemia and Neutropenia.
5. The Presence of abnormal cells in circulation.
6. Hyperproteinemia or Monoclonal Gammopathies.
7. Unexplained Hypercalcemia.



B.I.G.[™] Bone Injection Gun
The world's first user-friendly IO device

Vet B.I.G™ ADVANTAGES

The B.I.G completely eliminates delays in IV access for administering fluids and medications under field conditions and provides you with the perfect solution:

- User-friendly and relatively painless penetration.
- Suitable for blood transfusion.
- Extra Safe - no direct contact with patient's blood.
- No need to refer; simple in-clinic.
- No complications.
- Infusion established in less than 1 minute.

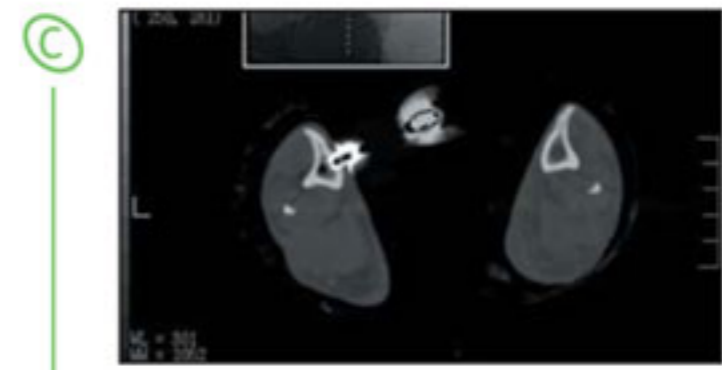
Vet B.I.G™ PRIMARY ANATOMICAL SITE



Canine



Feline



Canine CT Scan

Primary site for Intraosseous Infusion is the Proximal Tibia.

Vet B.I.G™ SIMPLE TO USE

Using the B.I.G is simple and quick. After disinfecting the injection site, and adjusting the penetration depth:



Position the B.I.G at site with one hand and pull out the Safety Latch with the other hand



Trigger the B.I.G at 90° to the surface



Remove the B.I.G and pull out the stylet trocar



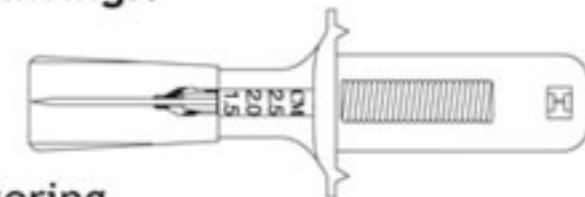
Stabilize the cannula, and connect syringe infusion set

The cannula remains firmly positioned in the bone and can be attached to any standard IV system.

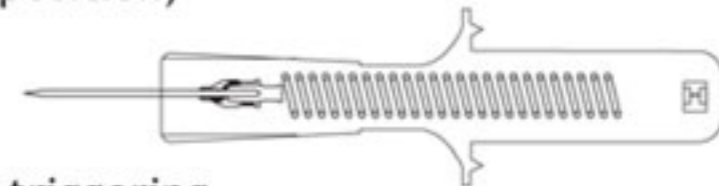
*For detailed instructions, see user's leaflet

Warning: use of the B.I.G is restricted to trained and skilled personnel.

Instrument Drawings:



A. Before triggering (locked position)



B. After triggering

